

## The Art of Patricia Blau

By Kim Bromley



Patricia Blau, known to her friends and acquaintances as Patty, is not only a bird rescuer and former film professional, she is also an artist who has worked with both paint and ceramics.

Patty has been a lover of both art and animals all her life. In the 1970s she pursued a degree in fine art with an emphasis in painting at Syracuse University. After college, however, she pursued a predictable income. In 1979, that pursuit led her to the Bay Area, where she worked for George Lucas' Industrial Light & Magic answering phones and dreaming of a more creative life.

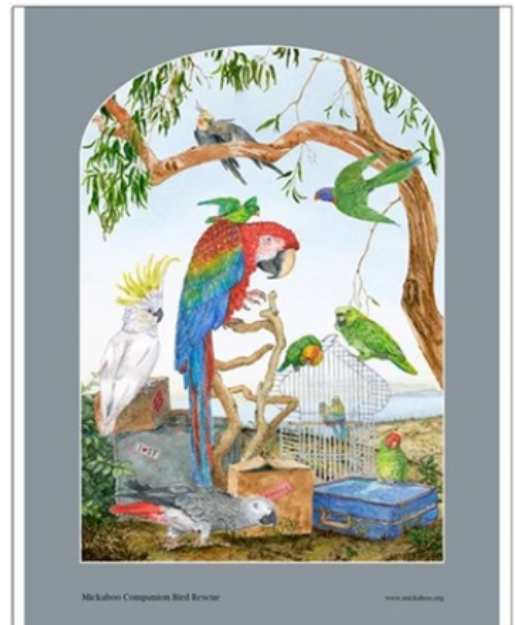
When she moved to ILM's model shop to coordinate the artists in that department, Patty was able to spend more time with working artists and their tools, but she did not have a hands-on

role there. After the model shop, she became a staple of the production department and eventually achieved the title of Vice President in charge of Animation Development.

During her years of working at ILM, Patty gradually spent more and more of her personal time in her home studio developing her painting style. She created large format paintings with a fish-eye lens view of the world, where colors and objects were hyperbolic, but people and animals felt natural and evocative.

In 2003, Patty retired from the movie business to become a full-time artist. It was around this time that her love of birds took hold of her, too. With her newfound freedom, she became involved with Mickaboo and began deep, heartfelt relationships with rescued birds. Many of her most loved paintings and ceramics are of birds and dogs, some hers and some belonging to friends and family. Patty's own menagerie, at its height, numbered 13 birds and two dogs.

In 2014 Patty was diagnosed with early onset Alzheimer's. She continued to paint until it became difficult to render faces to her satisfaction. Ceramics kept her busy until more recently, when that also proved to be too challenging. Today, Patty hopes to share her art with friends, bird lovers and art lovers alike. Her dedication to Mickaboo has not diminished, and her wish to share the wealth of her art with her beloved birds still burns bright.



This December 9 and 10, a group of Patty's friends will host a benefit event titled "The Art of Patricia Blau," beginning with a wine and cheese reception on both days. This event, open to the public, will be

held at 32Ten Studios, 3210 Kerner Blvd., San Rafael, on Saturday the 9th from 5–8 p.m. and on Sunday the 10th from noon to 4 p.m. Sales of Patty's art will benefit Mickaboo Companion Bird Rescue, where it will be used to provide care for our many rescued birds with veterinary needs.

Copyright © 2017 Mickaboo Companion Bird Rescue  
All Rights Reserved